

THIS IS NOT A COTTAGE.  
IT'S WAY MORE SPACIOUS.

THIS IS NOT A BUNGALOW.  
WE'RE NOT IN THE 70s.

A PENTHOUSE?  
CERTAINLY NOT.

THIS IS NOT EVEN A VILLA.  
BECAUSE IT'S TALLER.

IT'S A  
**VERTILLA**

**P R I M A N T I**

VERTILLAS

DESIGNED TO YOU

# LAUNCHING THE WORLD'S FIRST PRIMANTI VERTILLAS

It's not just the vertical build but intelligent design that defines a Vertilla. Take its naturally-lit column for instance, which allows natural light and air to seep into every corner. Or the remote-controlled basement parking that ensures open green spaces outside. The massive common areas housed within allow for memorable parties, while the spa and sauna at our community building/clubhouse are perfect for those who long for some lone time. And as if a private garden and plunge pool weren't enough, this home spoils you with a private elevator too. All intelligently designed with only one thing in mind. You.



Actual image shot on site in January, 2018

Grand community building/clubhouse with all modern amenities



Image for representation purpose only

Automated security features to make life simpler



Image for representation purpose only

Remote-controlled basement parking ensures green spaces above



Actual image shot on site in January, 2018

# ABOUT PRIMANTI VERTILLAS

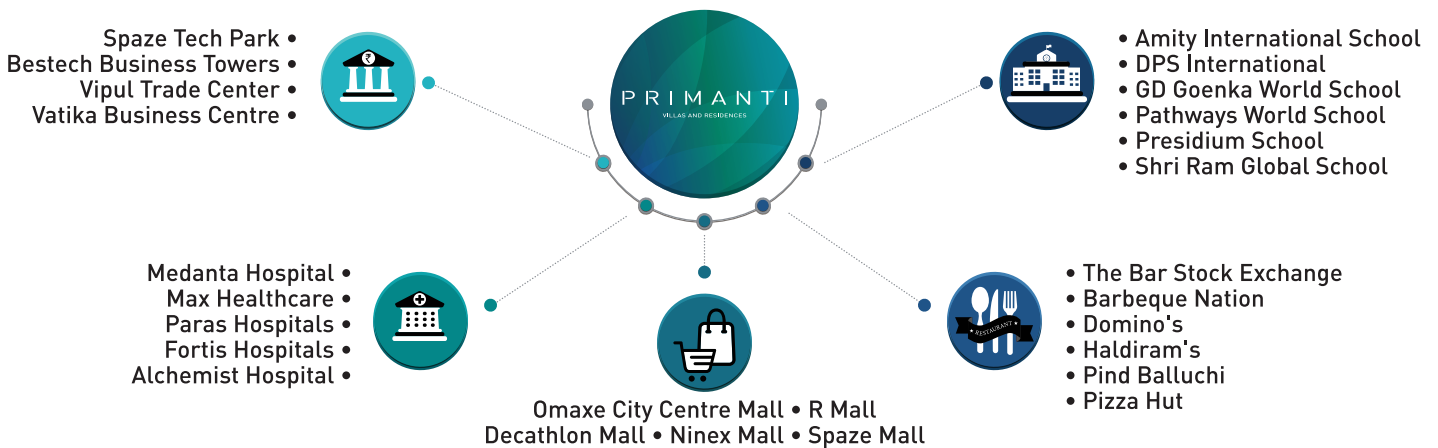
Primanti Vertillas is situated on the Southern Peripheral Road (SPR) in Sector 72, Gurgaon. It is housed in a residential development spreading over an area of 36 acres. Discover a home where modern architecture merges seamlessly with the natural landscape. A retreat for the senses, within the city of Gurgaon.

## SPR

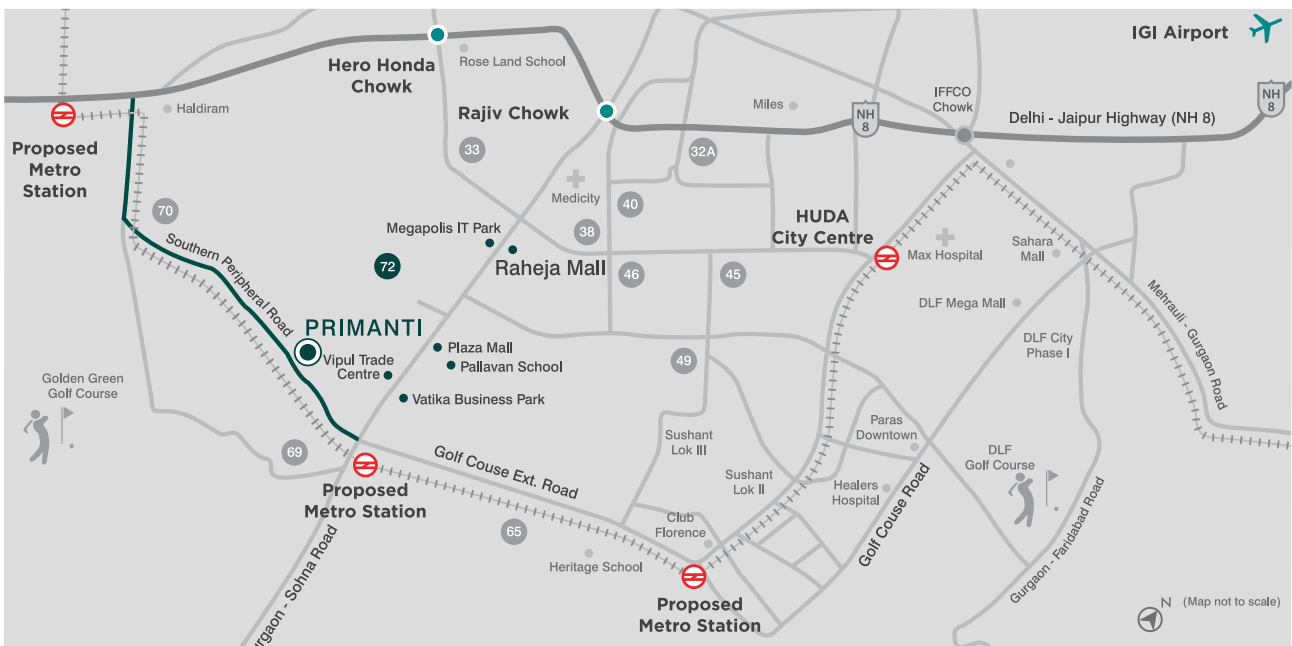
- Connects Golf Course Extension to NH 8 • To be extended into a 6 lane expressway
- Intersects Sohna Road and will connect to Gurgaon-Faridabad Road • Located on Southern Peripheral Road
- High speed access to airport, business centers, shopping malls etc. • Metro connectivity in future

## VIBRANT LIFESTYLE

Everything you could need, at a stone's throw



## CONNECTIVITY



- 5 km Access to NH-8
- 22 km International Airport
- 25 km Domestic Airport
- 3 km Shopping Malls

# LIFESTYLE AMENITIES



Refresh yourself with hot coffee and warm ambience: **Café**



Well Equipped **Gymnasium** to keep you healthy



Soak yourself in pleasant breeze and water at the **Outdoor Pool**

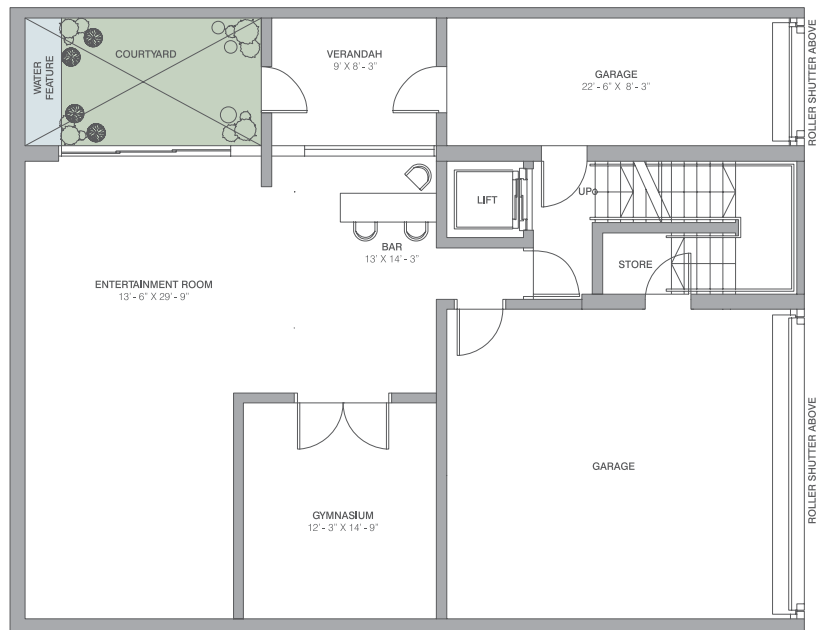
## || ALSO AVAILABLE ||

Temperature-Controlled Indoor Pool • Spa with Sauna • Entertainment Room  
Poolside Cafeteria • Squash / Badminton / Tennis Courts • Basketball Courts • Changing Rooms (Male and Female)

# VERTILLA

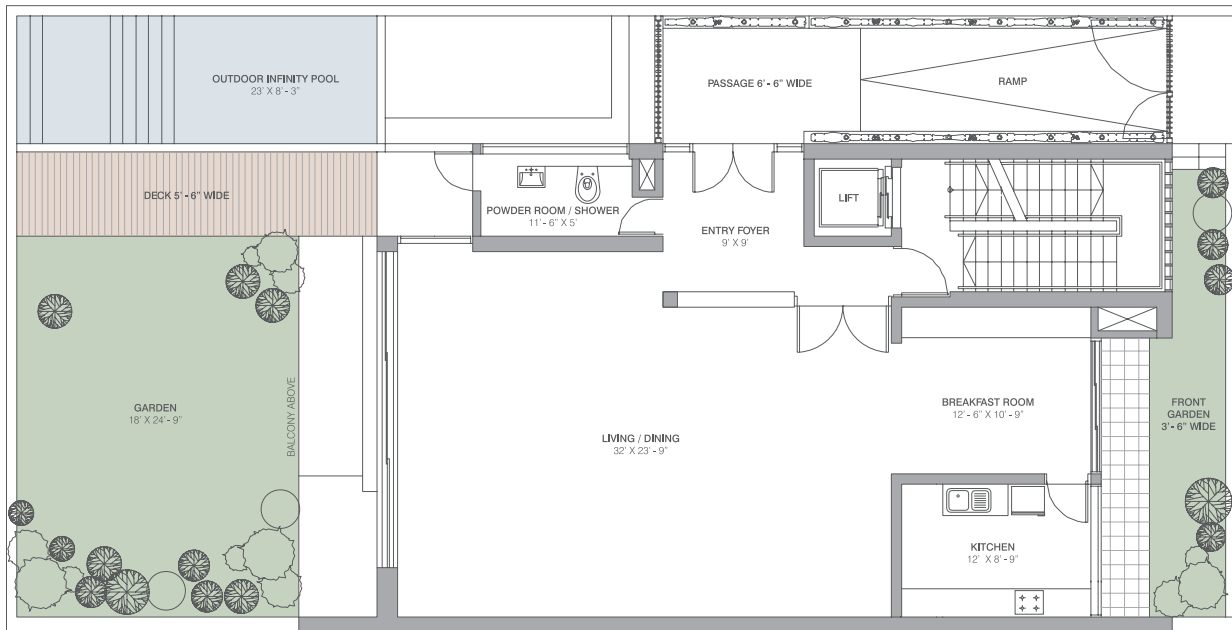
LARGE (VB)

	Sq.m.	Sq.ft.
Carpet Area	478.289	5148.303
Balconies	17.046	183.483
Verandah	10.715	115.336
GA/Terrace/ Courtyard	242.358	2608.742
Garage	59.762	643.278



## BASEMENT

Disclaimer : Measurements are approximate and are subject to minor variations.  
1 Sq. Meter = 10.76 Sq. Feet. 1 Meter = 3.28 Foot.  
All dimensions are in feet.



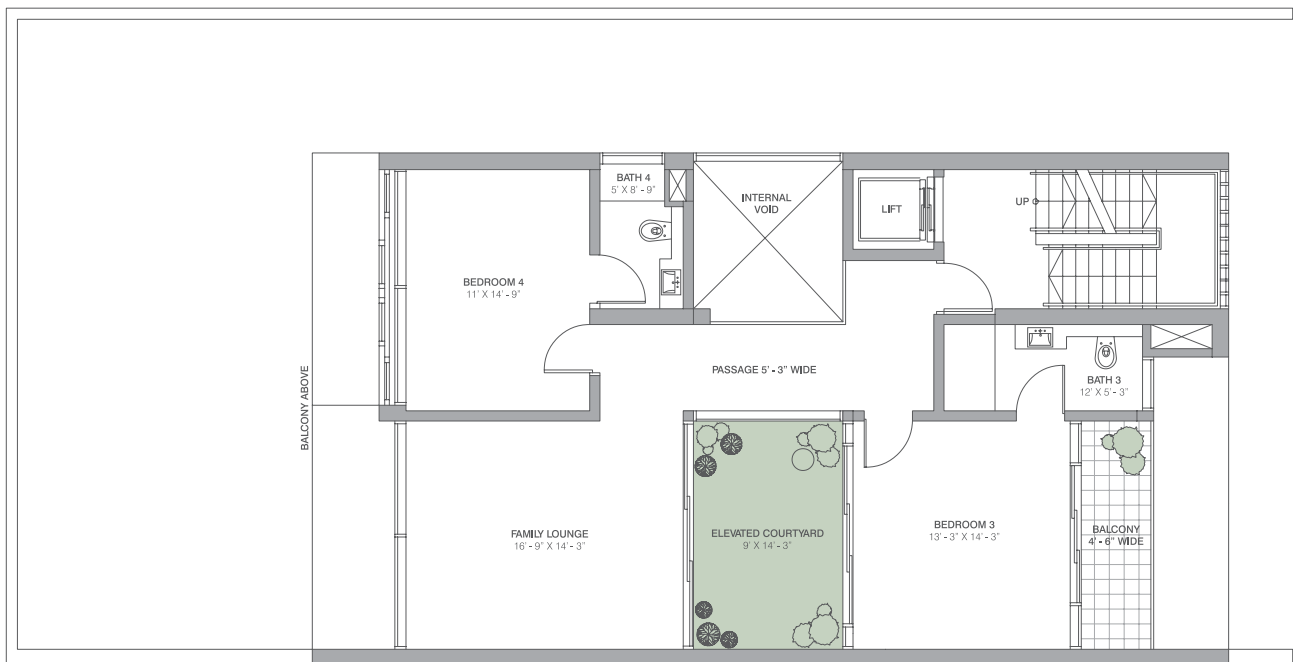
## GROUND FLOOR

Disclaimer : Measurements are approximate and are subject to minor variations.  
 1 Sq. Meter = 10.76 Sq. Feet. 1 Meter = 3.28 Foot.  
 All dimensions are in feet.

# VERTILLA

LARGE (VB)

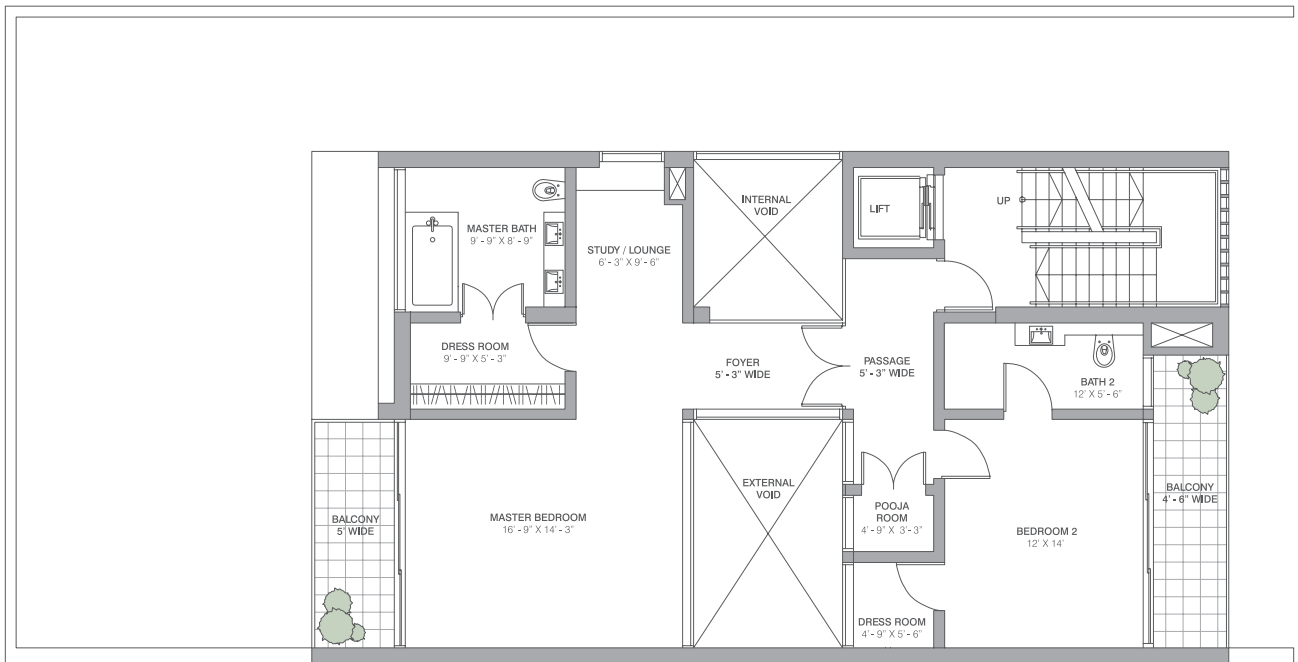
	Sq.m.	Sq.ft.
Carpet Area	478.289	5148.303
Balconies	17.046	183.483
Verandah	10.715	115.336
GA/Terrace/ Courtyard	242.358	2608.742
Garage	59.762	643.278



## FIRST FLOOR

Disclaimer : Measurements are approximate and are subject to minor variations.  
1 Sq. Meter = 10.76 Sq. Feet. 1 Meter = 3.28 Foot.  
All dimensions are in feet.





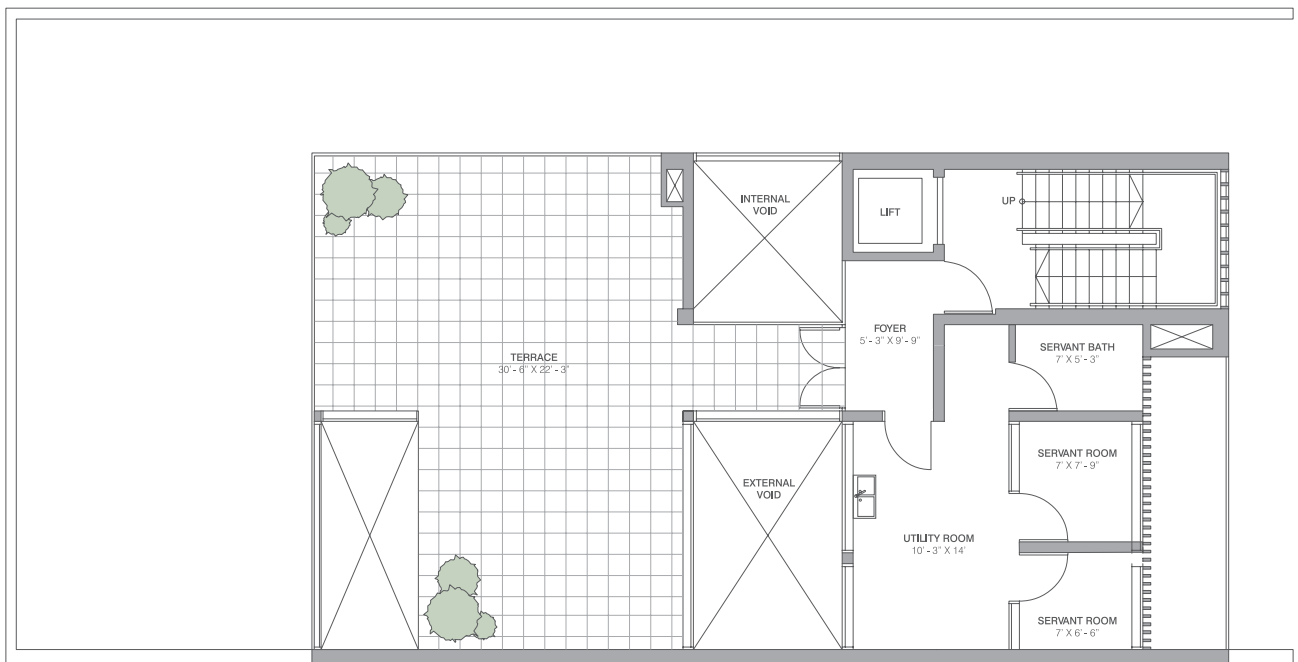
## SECOND FLOOR

Disclaimer : Measurements are approximate and are subject to minor variations.  
 1 Sq. Meter = 10.76 Sq. Feet. 1 Meter = 3.28 Foot.  
 All dimensions are in feet.

# VERTILLA

LARGE (VB)

	Sq.m.	Sq.ft.
Carpet Area	478.289	5148.303
Balconies	17.046	183.483
Verandah	10.715	115.336
GA/Terrace/ Courtyard	242.358	2608.742
Garage	59.762	643.278



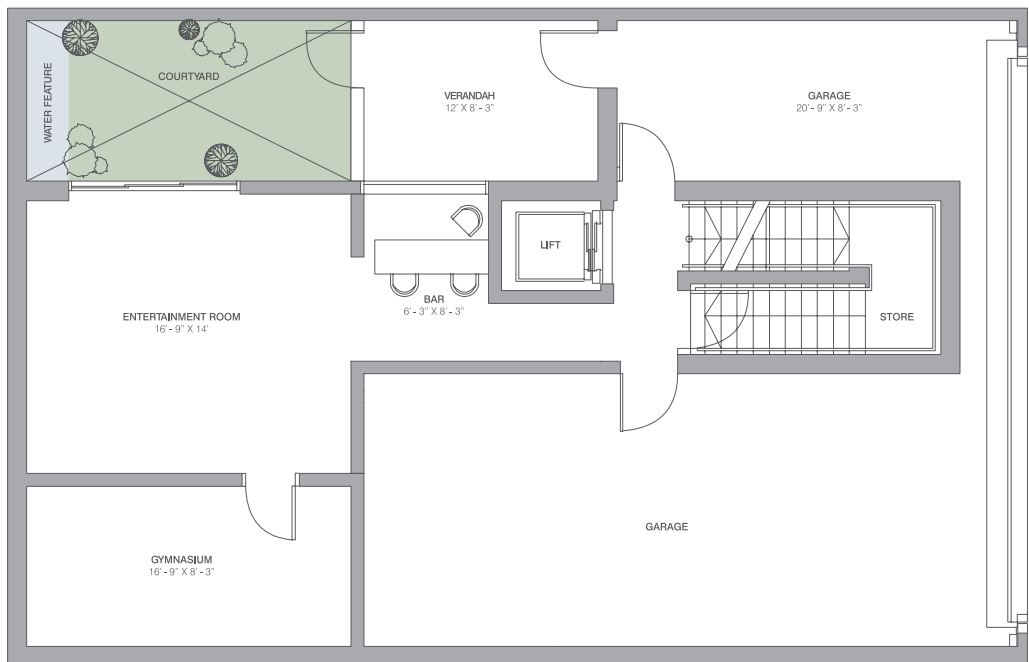
## TERRACE

Disclaimer : Measurements are approximate and are subject to minor variations.  
1 Sq. Meter = 10.76 Sq. Feet. 1 Meter = 3.28 Foot.  
All dimensions are in feet.

# VERTILLA

SMALL (VA)

	Sq.m.	Sq.ft.
Carpet Area	361.130	3887.203
Balconies	15.901	171.158
Verandah	15.999	172.213
GA/Terrace/ Courtyard	168.237	1810.903
Garage	59.031	635.410



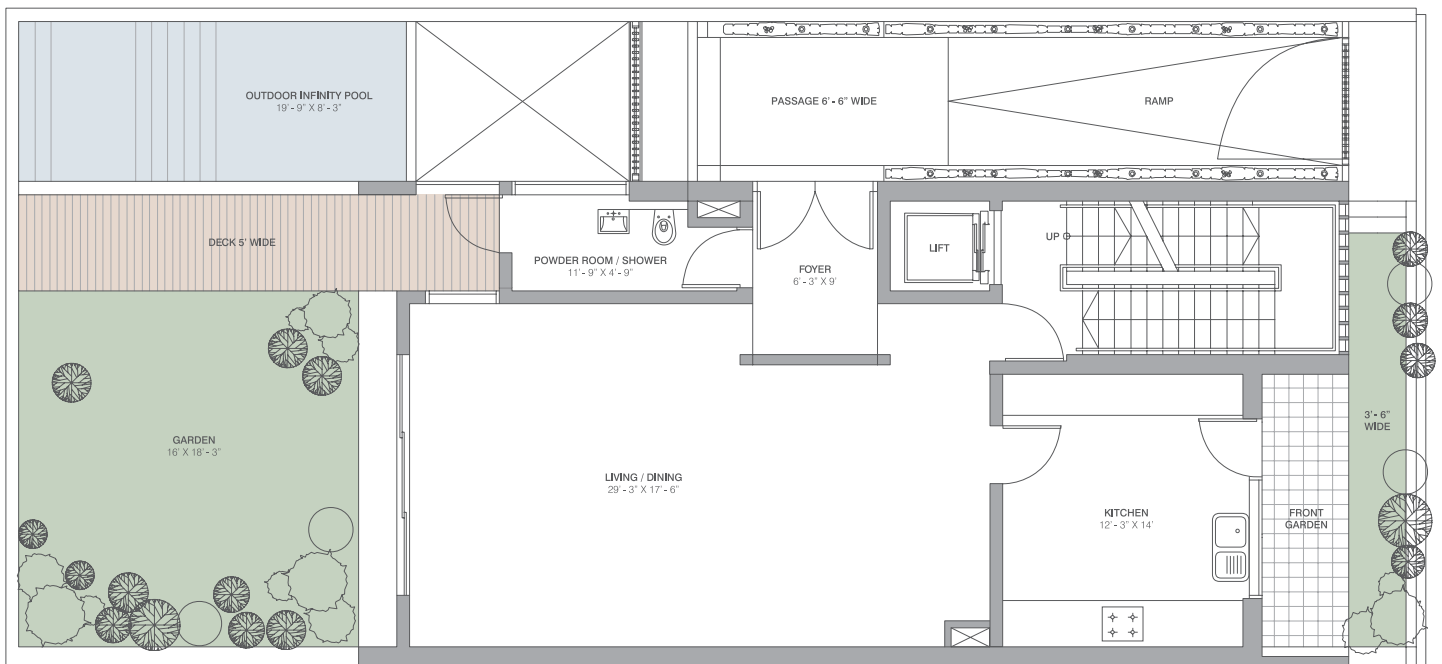
## BASEMENT

Disclaimer : Measurements are approximate and are subject to minor variations.  
1 Sq. Meter = 10.76 Sq. Feet. 1 Meter = 3.28 Foot.  
All dimensions are in feet.

# VERTILLA

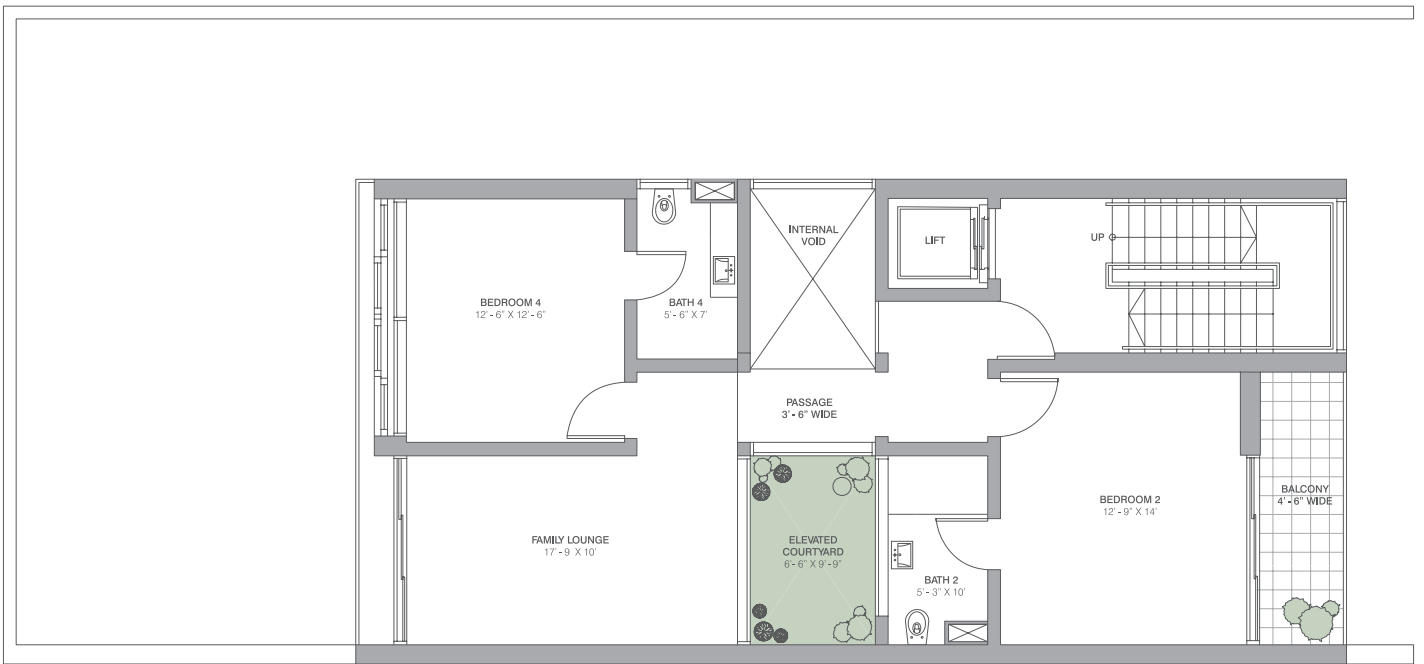
SMALL (VA)

	Sq.m.	Sq.ft.
Carpet Area	361.130	3887.203
Balconies	15.901	171.158
Verandah	15.999	172.213
GA/Terrace/ Courtyard	168.237	1810.903
Garage	59.031	635.410



## GROUND FLOOR

Disclaimer : Measurements are approximate and are subject to minor variations.  
1 Sq. Meter = 10.76 Sq. Feet. 1 Meter = 3.28 Foot.  
All dimensions are in feet.



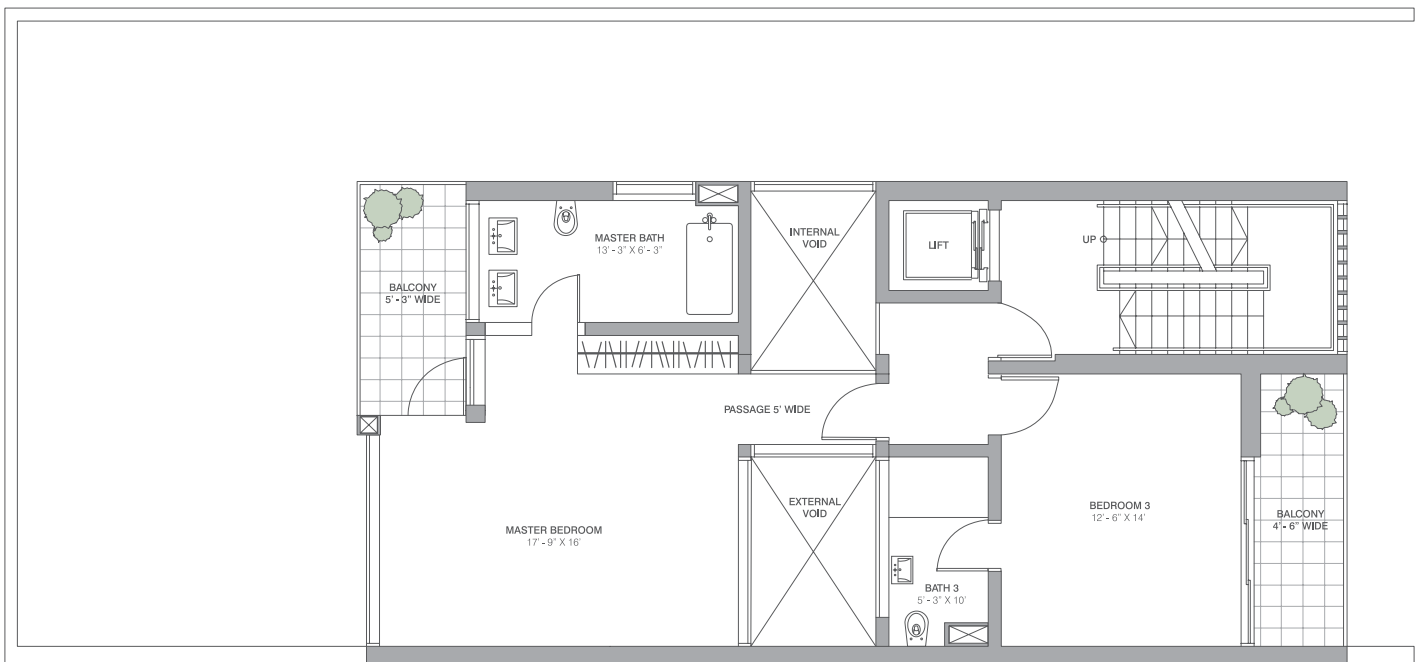
## FIRST FLOOR

Disclaimer : Measurements are approximate and are subject to minor variations.  
1 Sq. Meter = 10.76 Sq. Feet. 1 Meter = 3.28 Foot.  
All dimensions are in feet.

# VERTILLA

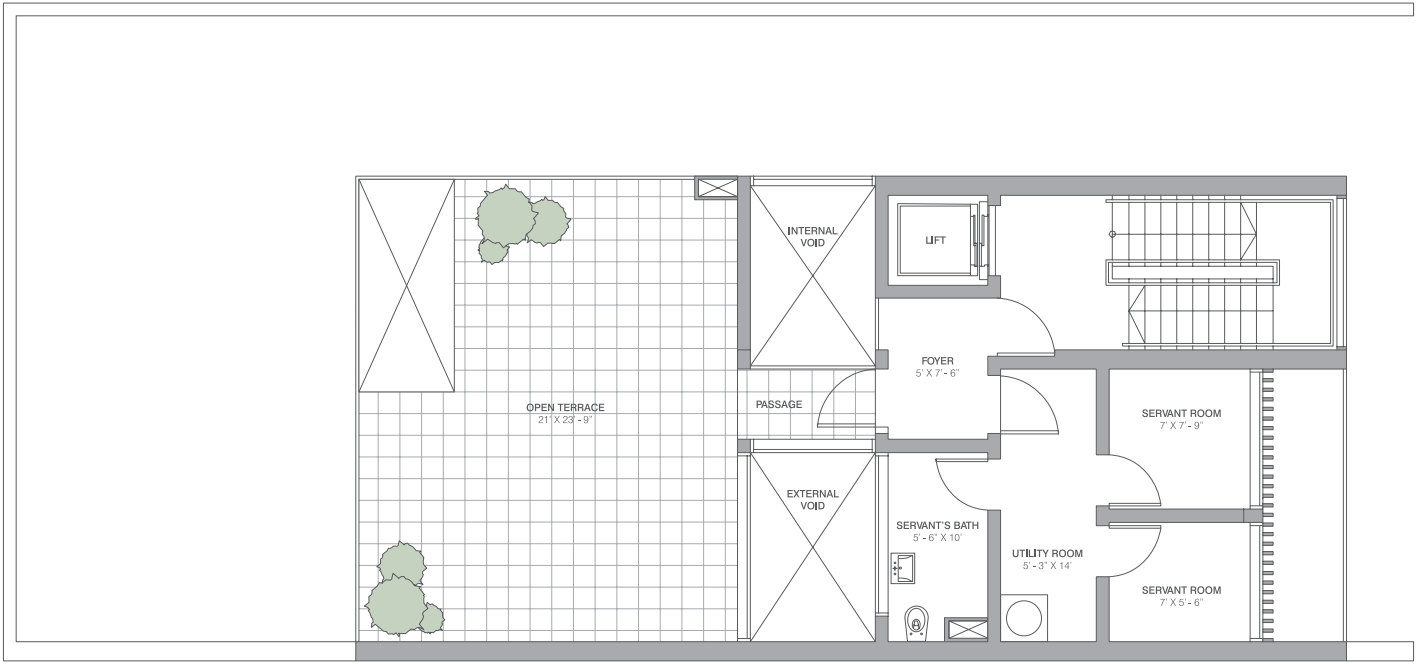
SMALL (VA)

	Sq.m.	Sq.ft.
Carpet Area	361.130	3887.203
Balconies	15.901	171.158
Verandah	15.999	172.213
GA/Terrace/ Courtyard	168.237	1810.903
Garage	59.031	635.410



## SECOND FLOOR

Disclaimer : Measurements are approximate and are subject to minor variations.  
1 Sq. Meter = 10.76 Sq. Feet. 1 Meter = 3.28 Foot.  
All dimensions are in feet.



## TERRACE

Disclaimer : Measurements are approximate and are subject to minor variations.  
 1 Sq. Meter = 10.76 Sq. Feet. 1 Meter = 3.28 Foot.  
 All dimensions are in feet.

PRIMANTI  
VERTILLAS  
DESIGNED TO YOU

Call : 1800 3004 8282

Site Office: Southern Peripheral Road, Sector 72, Gurgaon-122 101